

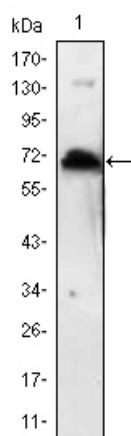


# KLHL1 Monoclonal Antibody

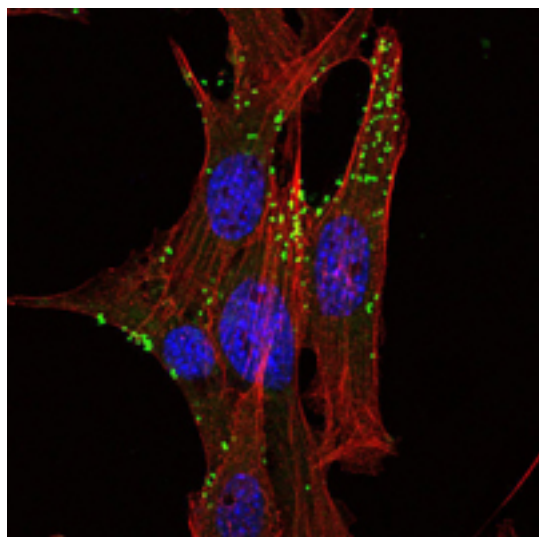
<b>Catalog No</b>	YP-Ab-12604
<b>Isotype</b>	IgG
<b>Reactivity</b>	Human
<b>Applications</b>	WB;IF;ELISA
<b>Gene Name</b>	KLHL1
<b>Protein Name</b>	Kelch-like protein 1
<b>Immunogen</b>	Purified recombinant fragment of human KLHL1 expressed in E. Coli.
<b>Specificity</b>	KLHL1 Monoclonal Antibody detects endogenous levels of KLHL1 protein.
<b>Formulation</b>	Ascitic fluid containing 0.03% sodium azide, 0.5% BSA, 50% glycerol.
<b>Source</b>	Monoclonal, Mouse
<b>Purification</b>	Affinity purification
<b>Dilution</b>	Western Blot: 1/500 - 1/2000. Immunofluorescence: 1/200 - 1/1000. ELISA: 1/10000. Not yet tested in other applications.
<b>Concentration</b>	1 mg/ml
<b>Purity</b>	≥90%
<b>Storage Stability</b>	-20°C/1 year
<b>Synonyms</b>	KLHL1; KIAA1490; Kelch-like protein 1
<b>Observed Band</b>	
<b>Cell Pathway</b>	Cytoplasm, cytoskeleton.
<b>Tissue Specificity</b>	Highly expressed in brain.
<b>Function</b>	function: May play a role in organizing the actin cytoskeleton of the brain cells., similarity: Contains 1 BTB (POZ) domain., similarity: Contains 6 Kelch repeats., tissue specificity: Highly expressed in brain.,
<b>Background</b>	The KLHL1 protein belongs to a family of actin-organizing proteins related to Drosophila Kelch (Nemes et al., 2000 [PubMed 10888605]). [supplied by OMIM, Feb 2010],
<b>matters needing attention</b>	Avoid repeated freezing and thawing!
<b>Usage suggestions</b>	This product can be used in immunological reaction related experiments. For more information, please consult technical personnel.



## Products Images



Western Blot analysis using KLHL1 Monoclonal Antibody against KLHL1 recombinant protein.



Immunofluorescence analysis of NIH/3T3 cells using KLHL1 Monoclonal Antibody (green). Red: Actin filaments have been labeled with Alexa Fluor-555 phalloidin.